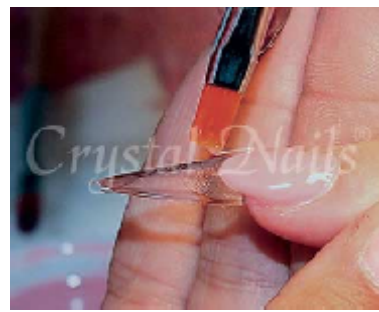




1. Put a Crystal Nails Butterfly form on the nail and make a slight layer on it. (Use CN Builder gel I).



2. Apply the CN Cover pink nail bed extender gel on the slight layer and create the smile line.



3. After 3 mins. UV Lamp use the Crystal Nails Brilliant gel (510) to shape the nail end.



4. Put the nails under the UV Lamp for 3 mins. and fill up the nails with CN Builder Gel I.



5. After 3 min. UV Lamp, fixing and buffering, use the So Easy decor lacquers to paint slight lines.



6. After drying, apply CN Top shine gel on the nail and put it under the UV Lamp for 3 mins.



7. Create acrylic flowers (from Crystal Nails colored acrylic powder) on the nail surface.



8. Decorate the flowers with So Easy décor lacquers.

10. Finish Picture

