



1. Prepare the nails. Use Nail prep and Primer.



2. Apply the Crystal Clear Competition Tip.



3. File the on the Tip with CN or Xtreme file 150/150.



4. Apply a base coat with CN Builder Pink gel.



5. Create the free edge and the smile line with CN Builder Xtreme White gel.



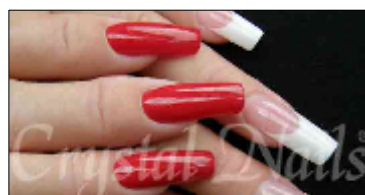
6. Cover with Xtreme Clear gel.



7. Use the C curve Bending Tweezers to create The perfect C curve.



8. Finish with CN Top shine gel.



9. Finish Picture!!!